

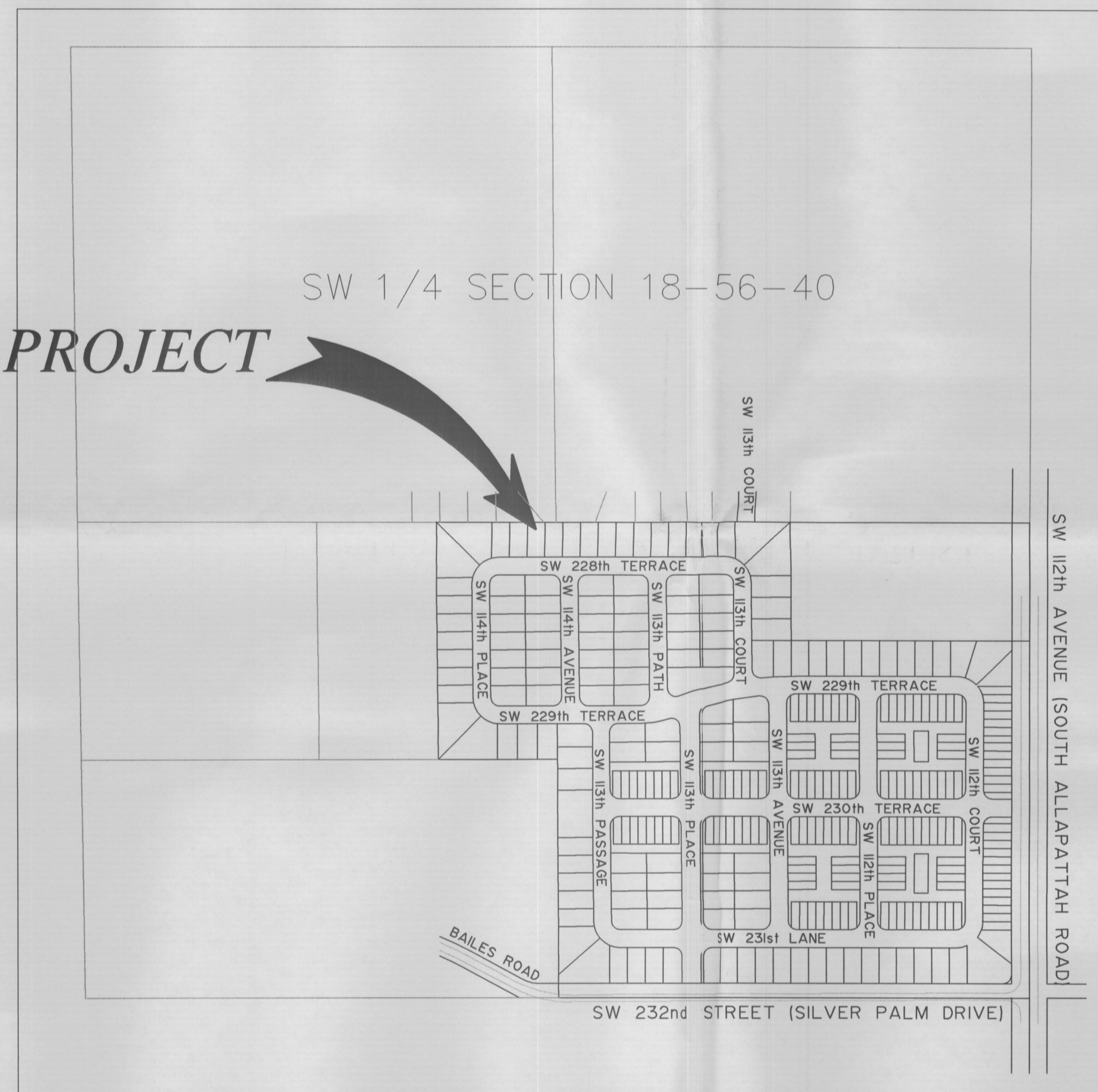
SILVER PALM HOMES

PAVING & DRAINAGE AS-BUILT PLANS

7453

SECTION 18 TOWNSHIP 56 SOUTH, RANGE 40 EAST

THIS PROJECT



LOCATION MAP
SCALE 1"=300'

INDEX OF DRAWINGS

SHEET #	DESCRIPTION
1	PAVING & DRAINAGE COVER SHEET
2-5	PAVING & DRAINAGE AS-BUILT PLANS

P&D AS-BUILT LEGEND

DRAINAGE MANHOLE

DRAINAGE STRUCTURE

DENOTES AS-BUILT INFORMATION

STRUCTURE #
 RW. EL. 6.15

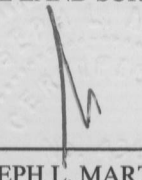
6" SIDEWALK E/P ELEVATION

2" CURB & GUTTER E/P

CENTERLINE ELEVATION

SURVEYOR'S CERTIFICATION:

WE HEREBY CERTIFY THAT THE ATTACHED "SKETCH OF AS-BUILT SURVEY WAS PREPARED UNDER OUR DIRECTION AND COMPLIES WITH THE MINIMUM TECHNICAL STANDARD AS ADOPTED BY THE FLORIDA BOARD OF SURVEYORS AND MAPPERS IN CHAPTER 61G17-6, FLORIDA ADMINISTRATIVE CODE, PURSUANT TO SECTION 472.027, FLORIDA STATUTES. COUNTY-WIDE LAND SURVEYORS, INC. L34680

BY: 
 JOSEPH L. MARTIN
 PROFESSIONAL SURVEYOR &
 MAPPER No 4368
 STATE OF FLORIDA

NOT VALID WITHOUT THE SIGNATURE AND THE ORIGINAL RAISED SEAL OF A FLORIDA LICENSED SURVEYOR AND MAPPER.

COUNTY-WIDE LAND SURVEYORS, INC.
 LAND SURVEYORS - PLANNERS
 14241 S.W. 14th COURT
 MIAMI, FLORIDA 33186
 PH: 305.232.2240
 FX: 305.232.2386

RECORD OF REVISION	DESCRIPTION	BY	APP.
No.	DATE		

SILVER PLAM HOMES

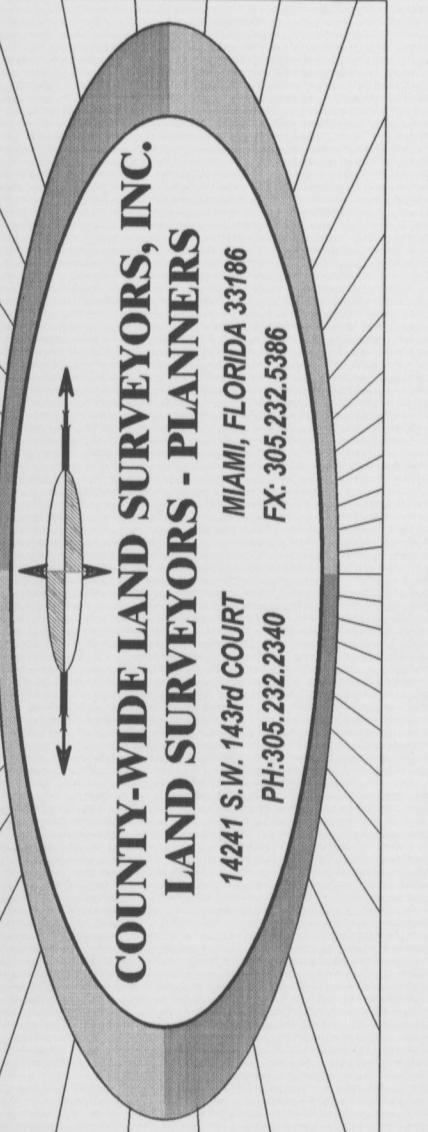
TYPE OF PROJECT: PAVING & DRAINAGE AS-BUILT COVER SHEET

CLIENT: CARIBE HOMES

PROJ. LOC.: SECTION 18, TOWNSHIP 56 SOUTH, RANGE 40 EAST
 MIAMI-DADE COUNTY, FLORIDA

11755 SW 60 STREET # 210
 MIAMI, FLORIDA 33175

SCALE:	AS SHOWN
DESIGNED BY:	FORD
DRAWN BY:	JFC
CHECKED BY:	GB
SET #	
DATE:	06/10/2005
PROJECT No:	2004-027
SHEET:	1 OF 5



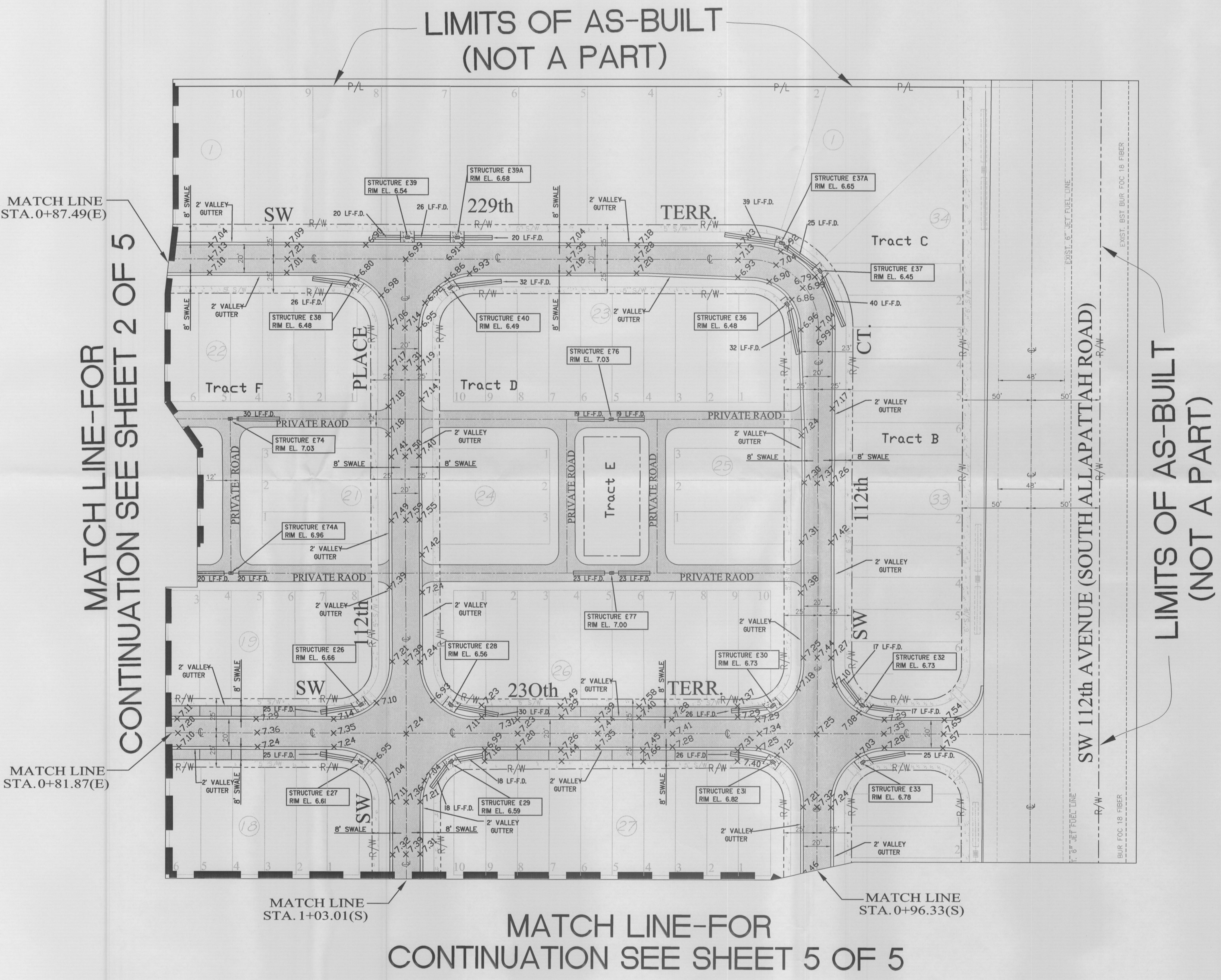
NO.	DATE	DESCRIPTION

SILVER PLAM HOMES
 PAVING & DRAINAGE AS-BUILT PLAN
 CLIENT: CARIBE HOMES
 CLIENT ADDRESS: 11765 SW 99th STREET # 210 MIAMI, FLORIDA 33173
 PROJECT: SECTION 16, TOWNSHIP 25 SOUTH, RANGE 40 EAST MIAMI-DADE COUNTY, FLORIDA

SCALE:	1"=40'
DESIGNED BY:	FORD
DRAWN BY:	JFC
CHECKED BY:	GB
SET #	
DATE:	06/10/2005
PROJECT No:	2004-027
SHEET:	3 OF 5

BY: JOSEPH L. MARTIN
 PROFESSIONAL SURVEYOR &
 MAPPER No 4368
 STATE OF FLORIDA

NOT VALID WITHOUT THE SIGNATURE AND THE ORIGINAL RAISED SEAL OF A FLORIDA LICENSED SURVEYOR AND MAPPER.



MATCH LINE-
 CONTINUATION SEE SHEET 2 OF 5

MATCH LINE
 STA. 0+81.87(E)

MATCH LINE
 STA. 1+03.01(S)

MATCH LINE-FOR
 CONTINUATION SEE SHEET 5 OF 5

MATCH LINE
 STA. 0+96.33(S)

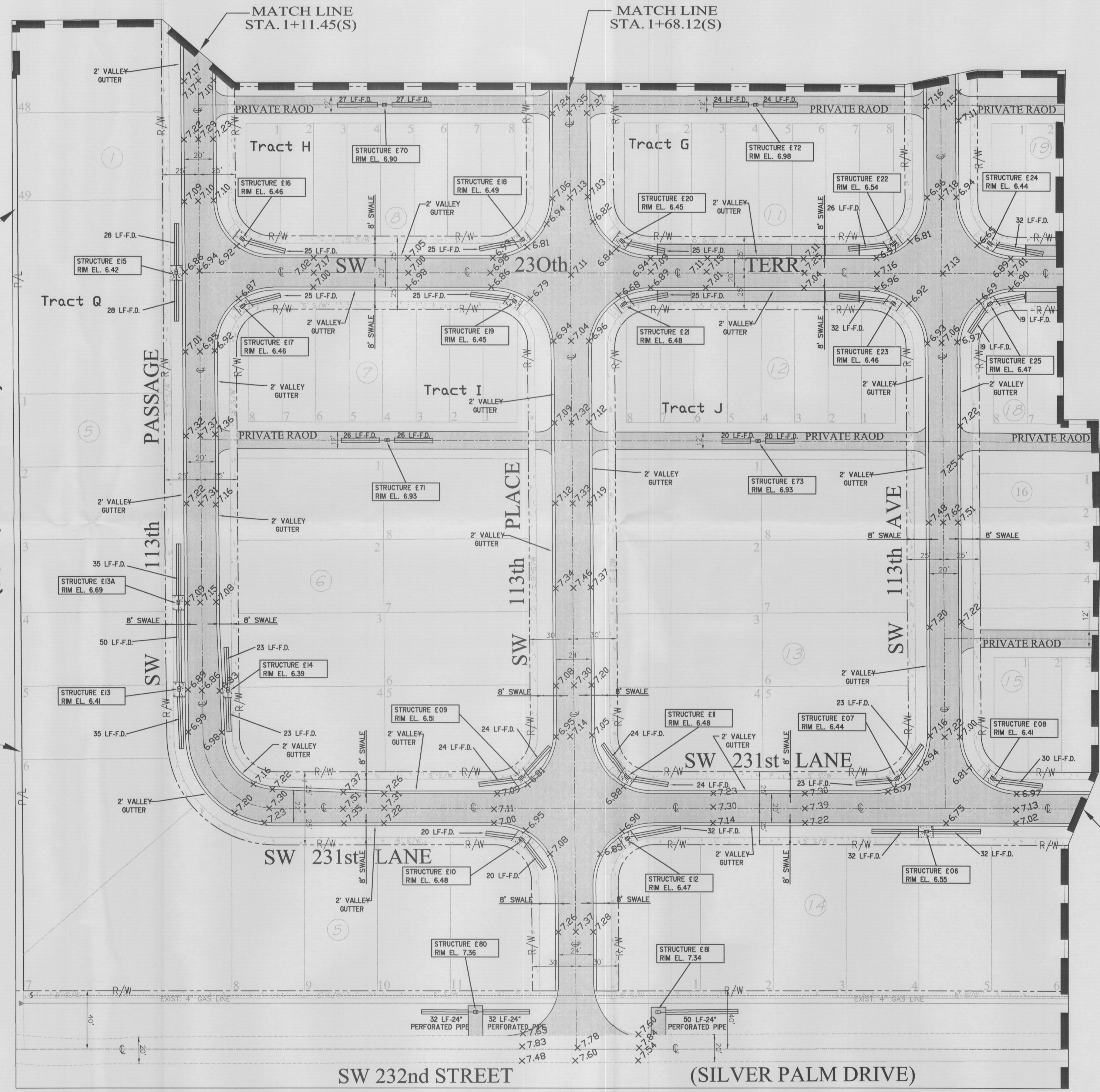
LIMITS OF AS-BUILT
 (NOT A PART)

LIMITS OF AS-BUILT
 (NOT A PART)

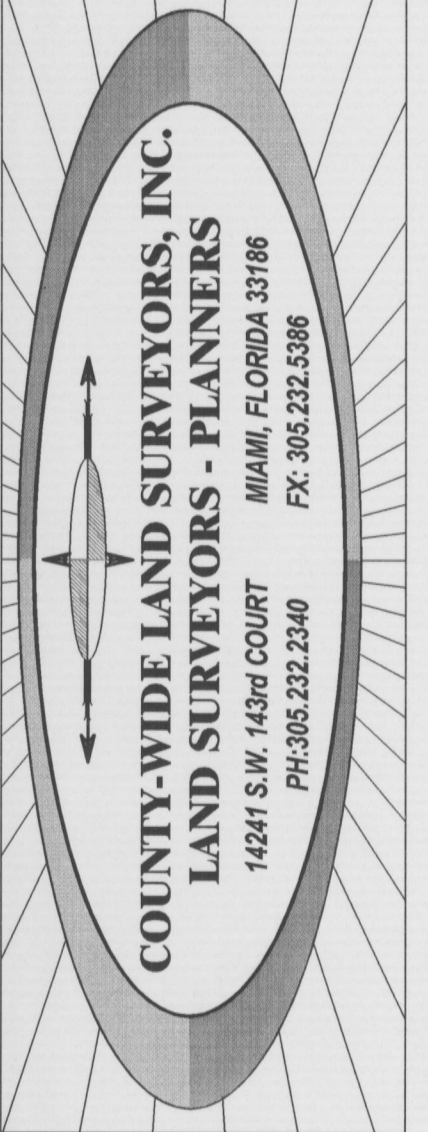
MATCH LINE-FOR
CONTINUATION SEE SHEET 2 OF 5



LIMITS OF AS-BUILT
(NOT A PART)



MATCH LINE-FOR
CONTINUATION SEE SHEET 5 OF 5



NO.	DATE	RECORD OF REVISION DESCRIPTION	BY	APP.

SILVER PALM HOMES
PAVING & DRAINAGE AS-BUILT PLAN
CLIENT: CARIBE HOMES
PROJECT ADDRESS: 11755 SW 98 STREET # 210 MIAMI, FLORIDA 33173
PROJ. LOC.: SECTION 18, TOWNSHIP 56 SOUTH, RANGE 40 EAST MIAMI-DADE COUNTY, FLORIDA

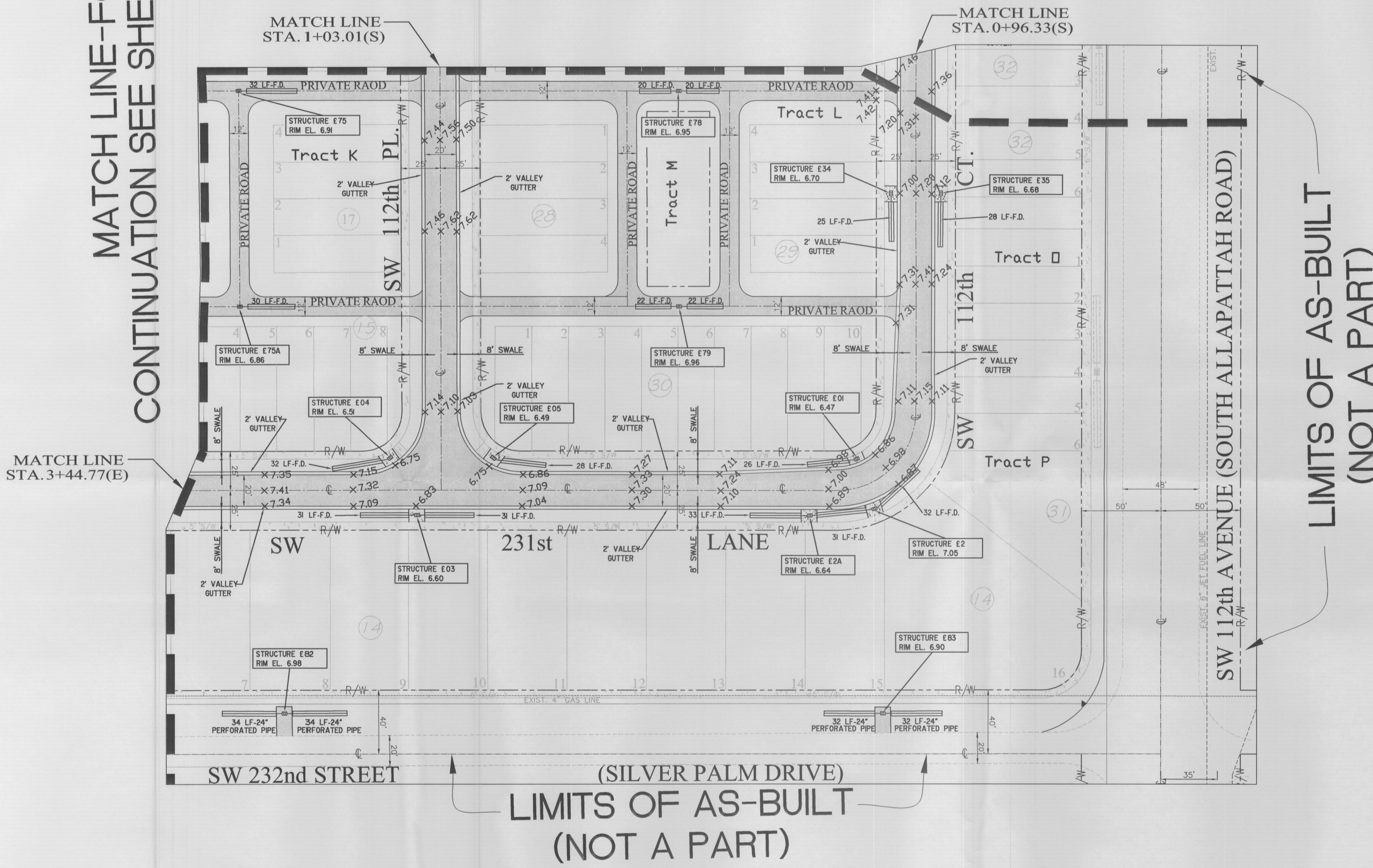
SCALE:	1"=40'
DESIGNED BY:	FORD
DRAWN BY:	JFC
CHECKED BY:	GB
SET #:	
DATE:	06/10/2005
PROJECT No:	2004-027
SHEET:	4 OF 5

BY: JOSEPH L. MARTIN
PROFESSIONAL SURVEYOR &
MAPPER No 4368
STATE OF FLORIDA

NOT VALID WITHOUT THE SIGNATURE AND THE ORIGINAL RAISED SEAL OF A FLORIDA LICENSED SURVEYOR AND MAPPER.

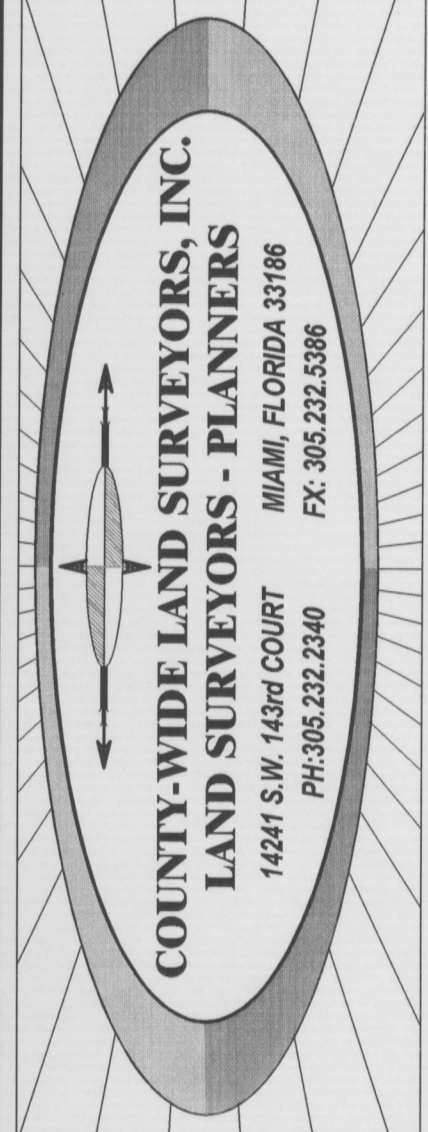
MATCH LINE-FOR
CONTINUATION SEE SHEET 4 OF 5

MATCH LINE-FOR
CONTINUATION SEE SHEET 3 OF 5



LIMITS OF AS-BUILT
(NOT A PART)


(SILVER PALM DRIVE)
LIMITS OF AS-BUILT
(NOT A PART)



No.	DATE	RECORD OF REVISION DESCRIPTION	BY	APP.

SILVER PALM HOMES
 TYPE OF PROJECT: PAVING & DRAINAGE AS-BUILT PLAN
 CLIENT: CARIBE HOMES
 CLIENT ADDRESS: 11755 SW 23rd STREET #210
 MIAMI, FLORIDA 33173
 PROJECT NO: 2004-027
 SHEET: 5 OF 5

SCALE:	1"=40'
DESIGNED BY:	FORD
DRAWN BY:	JFC
CHECKED BY:	GB
DATE:	06/10/2005
PROJECT NO:	2004-027
SHEET:	5 OF 5

BY: 
 JOSEPH L. MARTIN
 PROFESSIONAL SURVEYOR &
 MAPPER No. 4368
 STATE OF FLORIDA

NOT VALID WITHOUT THE SIGNATURE AND THE ORIGINAL RAISED SEAL OF A FLORIDA LICENSED SURVEYOR AND MAPPER.